



# THORMA

More than 100 year tradition


**EXCLUSIVE PRODUCTS**




# Contents





DELIA Ceramic.....	4
DELIA Serpentino.....	6
ATIKA Ceramic.....	8
ATIKA Serpentino.....	10
ANDORRA Ceramic.....	12
ANDORRA Serpentino.....	14
ZION Serpentino .....	15
ZARAGOZA Plus.....	16
TOLEDO .....	17
DYNAMIC Steel .....	18
DYNAMIC Serpentino .....	19
WIESBADEN .....	20
FALUN Serpentino .....	21
RIVO fireplace set.....	22
LAGO fireplace set.....	24
Heat Accumulation.....	26
Technical detail .....	27


 Accumulation refractory

 External air supply

 81% Efficiency

 Flue outlet – top

 Flue outlet – back

 Storage space







THORMA Výroba s.r.o. – limited partnership is a company that was established in 1998 and it continues in almost one hundred year tradition of ex-manufacturing corporation Kovosmalt Fiľakovo.

It became familiar to customers mainly by high-quality products with a long-time tradition, which are in compliance with demanding requirements of European standards. Crucial productive activity is the production of stoves, fireplaces and ovens for solid fuel, enamelled products, components for automobile industry and engineering industry. The company exports abroad more than 85% of its production. Its product portfolio has been continually and actively adjusted according to the market demand by own development, design, construction and the testing room.

In 2008 in the states of EU there have been agreed new climate goals for the greenhouse gas reduction. The key to success are renewable resources of energy. Neutral CO<sub>2</sub> is produced by wood combustion in modern heating appliances. The environment is less burdened in that way. Wood from domestic forests is available and the production of wood logs does not require any additional energy.

THORMA has been producing heating appliances that do not burden the environment for many years. Our stoves are protected with heat resistant water based color. These heating appliances have been tested in compliance with the strict regulations. THORMA heating appliances are sold in almost 20 European countries and their owners are pleased by agreeable and economical warm.

THORMA quality has a future.

## CERTIFICATES

- ①  The abbreviation Conformité Européenne provides security that a product is in compliance with all requirements of EU and that it is provable thanks to the relevant documentation as well
- ②  §15a B-VG od 2015 Products with this symbol are in compliance with the Austrian law for protection of the environment against harmful effects
- ③  **BlmSchV 2** Products with this symbol are in compliance with the 2nd grade of German federal law for protection against air pollution
- ④  VKF AEA I Products with this symbol are in compliance with the requirements of VKF (Cantonal Fire Insurance Association), Swiss coordination center for fire safety
- ⑤  PC T AE44 OPO35 Products with this symbol are in compliance with the relevant Russian state norm.
- ⑥  **Norwegian Standard** Norwegian standard - Products with this symbol are in compliance with the relevant Norwegian state norm. NS 3058-1, NS3058-2, NS3059.
- ⑦  **defra** Products under that trade mark correspond to British standards of Defra emissions.
- ⑧  EcoDesign 2022 Products must have minimum requirements regarding to energy efficiency. These requirements are qualified as Ecodesign requirements and their goals are to reduce the product's negative impact on the environment throughout its entire life cycle.

Unbranded product

40%



5,5 kg/h.



Combustion efficiency

 **THORMA**

80%



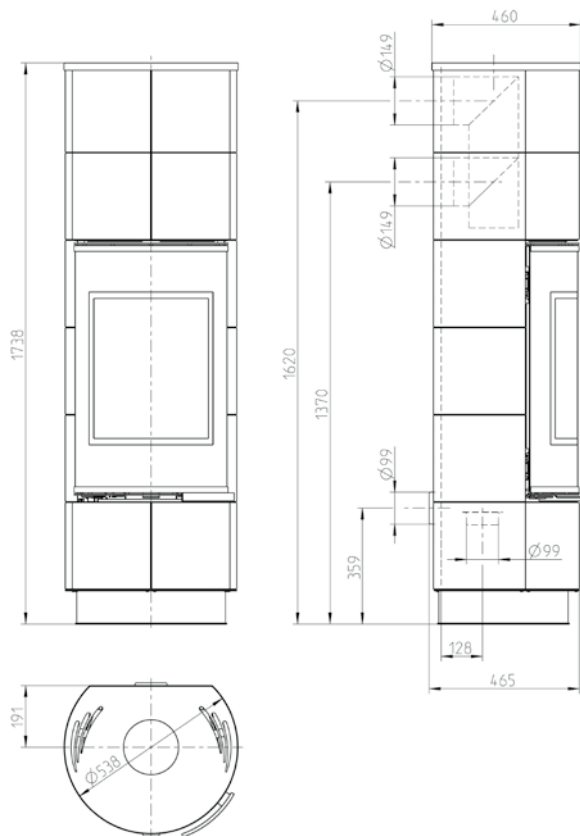
2,3 kg/h.



# DELIA Ceramic

DELIA Ceramic and DELIA Serpentino are among the top models of the THORMA product range of exclusive products. They are elegant and dominant and are the ideal solution for people looking for stylish living.

## DELIA Standard Ceramic



**DELIA Standard Ceramic White**  
F9489212010



\* available also in black ceramic

**DELIA Extra Ceramic Black shiny**  
F9489621111



\* available also in graphite matt ceramic

**DELIA Extra Ceramic White**  
F9489622011



**DELIA Plus Ceramic Black shiny**  
F9489611111



**DELIA Plus Ceramic White**  
F9489612011



**DELIA Plus Ceramic Graphite matt**  
F9489614310



**DELIA Ceramic**

Weight	158 ÷ 160 kg
Regulation range	3,8 ÷ 11,2 kW
Heat capacity	98 ÷ 180 m <sup>3</sup>
Flue outlet	top, back
Fuel type	wood
Maximal length of wood	25 cm
Flue gas flow wood / briquette	6,9 g/s
Chimney draught	12 Pa
Certificates	1, 2, 3, 5, 6, 7, 8

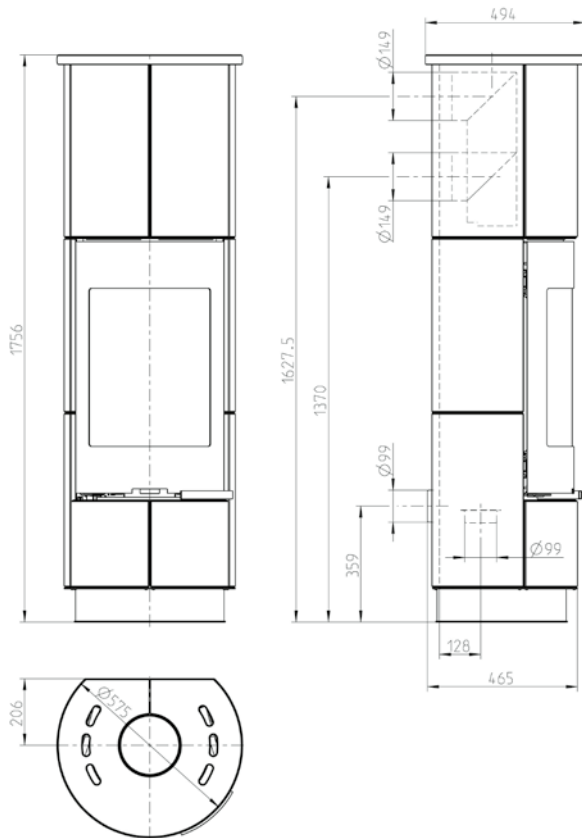




# DELIA Serpentino

Serpentino Soapstone is known as the ideal material for woodburning masonry heaters because it can absorb, store, and evenly radiate heat due to its high density.

## DELIA Standard Serpentino





**DELIA Extra Serpentino**  
F9489640611



**DELIA Plus Serpentino**  
F9489630611



**DELIA Standard Serpentino**  
F9489230610



**DELIA Serpentino**

Weight	285 ÷ 287 kg
Regulation range	3,8 ÷ 11,2 kW
Heat capacity	98 ÷ 180 m <sup>3</sup>
Flue outlet	top, back
Fuel type	wood
Maximal length of wood	25 cm
Flue gas flow wood / briquette	6,9 g/s
Chimney draught	12 Pa
Certificates	1, 2, 3, 5, 6, 7, 8

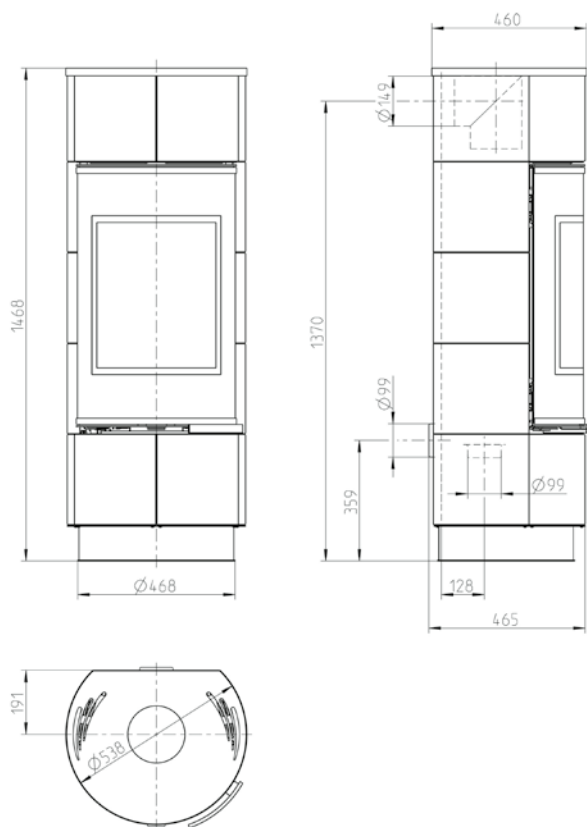




# ATIKA Ceramic

The ATIKA Ceramic model is made with handmade ceramic tiles in several colors. The product can be equipped with extra accumulation stone to prolong the heat radiation up to 9 hours after the fire extinguished. It is the perfect choice for a modern style of living.

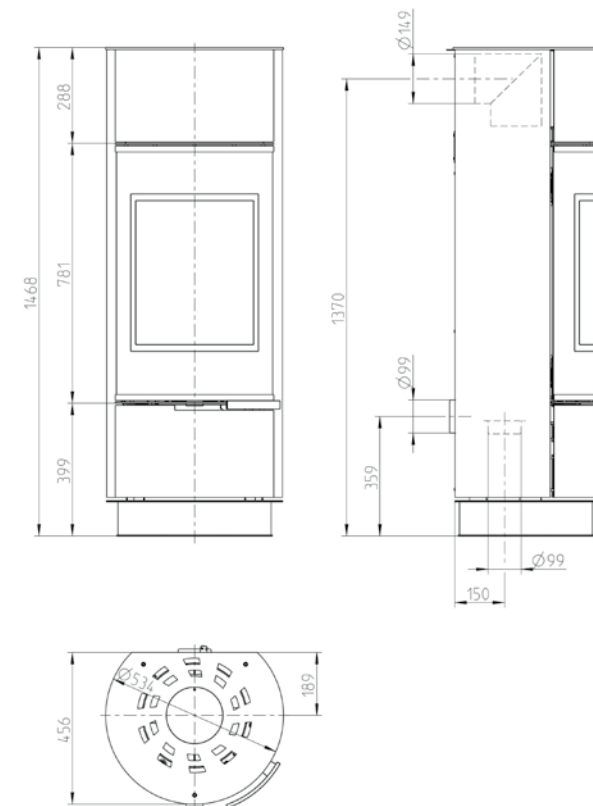
## ATIKA Ceramic



ATIKA Black shiny

- ❶ The preheated secondary air is directed on glass to wash it and to keep it clean. It is not necessary to clean it more than once per week.
- ❷ In the offer are also variants with accumulation system. Accumulation refractory stores heat and prolongs the heat radiation up to 9 hours after the fire extinguished.
- ❸ There are holes at the top to allow warm air to flow. The design allows convection air to flow faster and brings a higher efficiency.
- ❹ Single regulator controls the volume of primary and secondary air and is used to regulate the power and air supply.

## ATIKA Steel





**ATIKA Extra Ceramic Black shiny**  
F9489651111



\* available also in graphite matt ceramic

**ATIKA Extra Ceramic White**  
F9489652011



**ATIKA Steel**  
F9489480611



**ATIKA Plus Ceramic White**  
F9489322011



**ATIKA Plus Ceramic Black shiny**  
F9489321111



\* available also in graphite matt ceramic

**ATIKA Standard Ceramic White**  
F9489272011



**ATIKA Extra Ceramic**

Weight	147 kg
Regulation range	3,8 ÷ 11,2 kW
Heat capacity	98 ÷ 180 m <sup>3</sup>
Flue outlet	top, back
Fuel type	wood
Maximal length of wood	25 cm
Flue gas flow wood / briquette	6,9 g/s
Chimney draught	12 Pa
Certificates	1, 2, 3, 5, 7, 8

**ATIKA Steel**

Weight	140 kg
Regulation range	3,8 ÷ 11,2 kW
Heat capacity	98 ÷ 180 m <sup>3</sup>
Flue outlet	top, back
Fuel type	wood
Maximal length of wood	25 cm
Flue gas flow wood / briquette	6,9 g/s
Chimney draught	12 Pa
Certificates	1, 2, 3, 5, 7, 8

**ATIKA Standard**

Weight	146 kg
Regulation range	3,8 ÷ 11,2 kW
Heat capacity	98 ÷ 180 m <sup>3</sup>
Flue outlet	top, back
Fuel type	wood
Maximal length of wood	25 cm
Flue gas flow wood / briquette	6,9 g/s
Chimney draught	12 Pa
Certificates	1, 2, 3, 5, 7, 8

**ATIKA Plus Ceramic**

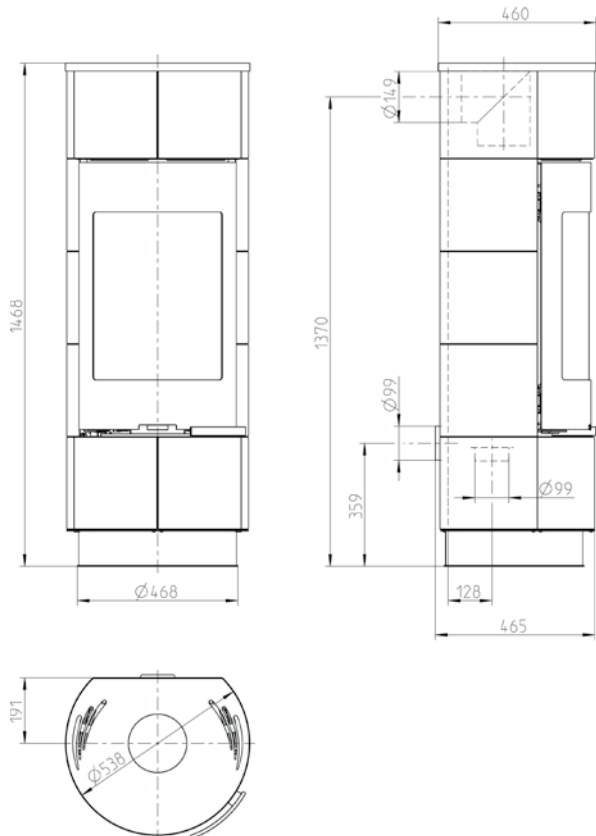
Weight	148 kg
Regulation range	3,8 ÷ 11,2 kW
Heat capacity	98 ÷ 180 m <sup>3</sup>
Flue outlet	top, back
Fuel type	wood
Maximal length of wood	25 cm
Flue gas flow wood / briquette	6,9 g/s
Chimney draught	12 Pa
Certificates	1, 2, 3, 5, 7, 8



# ATIKA Serpentino

The ATIKA Serpentino is a cylindrical woodburner with a large curved door to enjoy the flames from all areas of your room. Fabulous white ceramic sides and top to help radiate heat long after the fire was strangled.

## ATIKA Plus Serpentino





**ATIKA Standard Serpentino**  
F9489280611



**ATIKA Plus Serpentino**  
F9489340611



**ATIKA Extra Serpentino**  
F9489660611



**ATIKA Standard Serpentino**

Weight	269 kg
Regulation range	3,8 ÷ 11,2 kW
Heat capacity	98 ÷ 180 m <sup>3</sup>
Flue outlet	top, back
Fuel type	wood
Maximal length of wood	25 cm
Flue gas flow wood / briquette	6,9 g/s
Chimney draught	12 Pa
Certificates	1, 2, 3, 5, 7, 8



**A+**

**ATIKA Plus Serpentino**

Weight	271 kg
Regulation range	3,8 ÷ 11,2 kW
Heat capacity	98 ÷ 180 m <sup>3</sup>
Flue outlet	top, back
Fuel type	wood
Maximal length of wood	25 cm
Flue gas flow wood / briquette	6,9 g/s
Chimney draught	12 Pa
Certificates	1, 2, 3, 5, 7, 8



**A+**

**ATIKA Extra Serpentino**

Weight	270 kg
Regulation range	3,8 ÷ 11,2 kW
Heat capacity	98 ÷ 180 m <sup>3</sup>
Flue outlet	top, back
Fuel type	wood
Maximal length of wood	25 cm
Flue gas flow wood / briquette	6,9 g/s
Chimney draught	12 Pa
Certificates	1, 2, 3, 5, 7, 8



**A+**

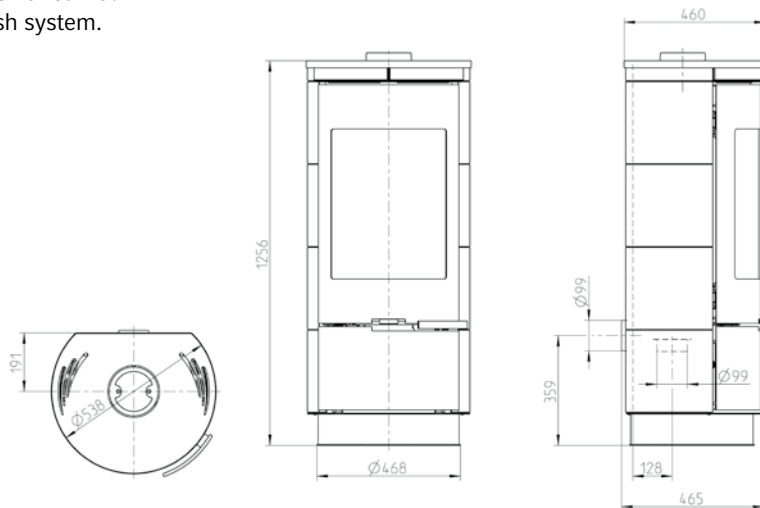


# ANDORRA Ceramic

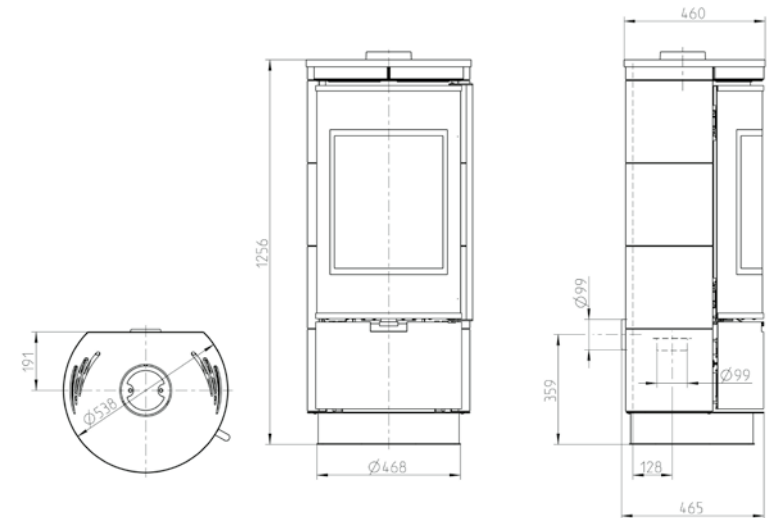


This is a contemporary free standing stove, offering superb views of a dancing fire through an expansive curved ceramic glass window, kept clean by the airwash system.

**ANDORRA Standard Ceramic**



**ANDORRA Extra Ceramic**





**ANDORRA Plus Ceramic Black shiny**  
F9489721111



\* available also in graphite matt ceramic

**ANDORRA Plus Ceramic White**  
F9489722011



**ANDORRA Standard Ceramic Black shiny\***  
F9489711111



\* available also in white ceramic

**ANDORRA Standard Ceramic Graphite matt**  
F9489714310



**ANDORRA Extra Ceramic Black shiny**  
F9489731111



\* available also in graphite matt ceramic

**ANDORRA Extra Ceramic White**  
F9489732011



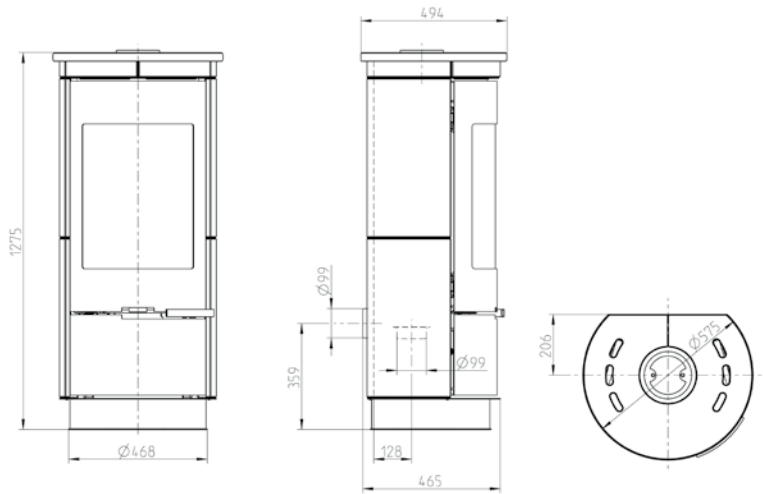
**ANDORRA Ceramic**

Weight	119 ÷ 121 kg
Regulation range	3,8 ÷ 11,2 kW
Heat capacity	98 ÷ 180 m <sup>3</sup>
Flue outlet	top
Fuel type	wood
Maximal length of wood	25 cm
Flue gas flow wood / briquette	6,9 g/s
Chimney draught	12 Pa
Certificates	1, 2, 3, 5, 6, 7, 8

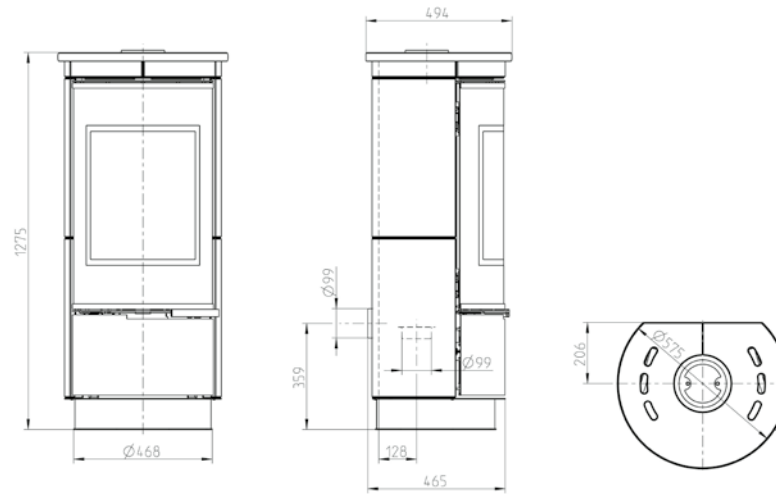


# ANDORRA Serpentino

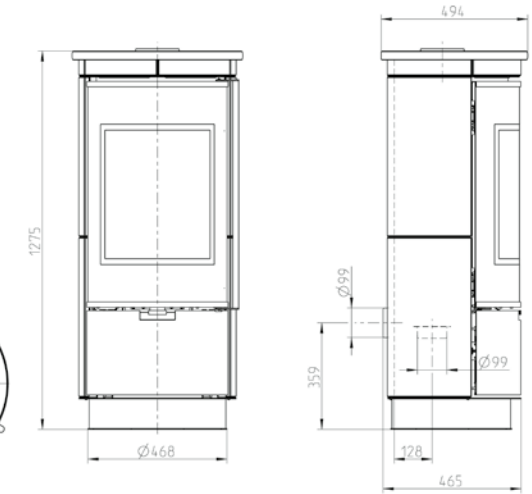
ANDORRA Standard Serpentino



ANDORRA Plus Serpentino



ANDORRA Extra Serpentino



ANDORRA Standard Serpentino  
F9489740611



ANDORRA Plus Serpentino  
F9489750611



ANDORRA Extra Serpentino  
F9489760611



## ANDORRA Serpentino

Weight	199 ÷ 201 kg
Regulation range	3,8 ÷ 11,2 kW
Heat capacity	98 ÷ 180 m <sup>3</sup>
Flue outlet	top
Fuel type	wood
Maximal length of wood	25 cm
Flue gas flow wood / briquette	6,9 g/s
Chimney draught	12 Pa
Certificates	1, 2, 3, 5, 6, 7, 8





## ZION Serpentino

Weight	365 kg
Regulation range	3,8 ÷ 11,2 kW
Heat capacity	98 ÷ 180m <sup>3</sup>
Flue outlet	top, back
Fuel type	wood
Maximal length of wood	25 cm
Flue gas flow wood / briquette	6,9 g/s
Chimney draught	12 Pa
Certificates	1, 2, 3, 5, 7, 8



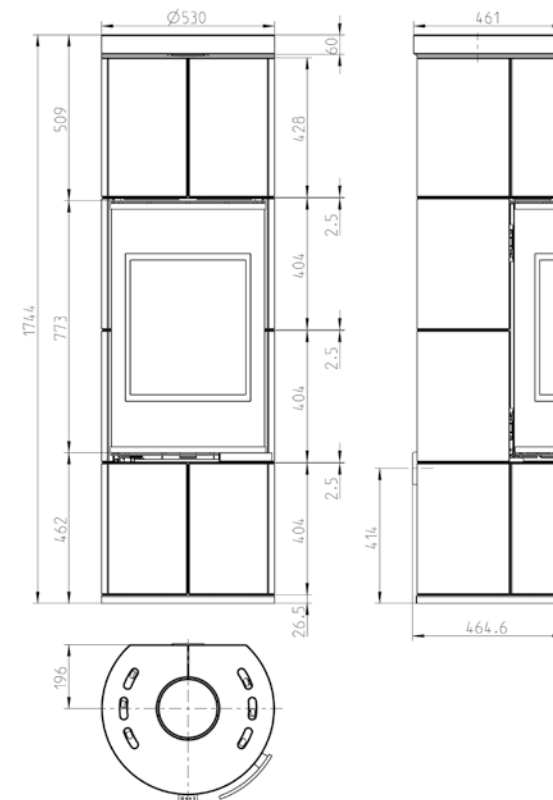
ZION Serpentino  
F9489430611

# ZION Serpentino

Modern Zion Serpentino fireplaces have 7,5 KW performance. High combustion efficiency of up to 84% will ensure low wood consumption and low emissions. The stoves are suitable for low-energy homes and can be connected to the external air supply. Fireplace stoves are equipped with accumulation stones to increase the thermal comfort.



ZION Serpentino

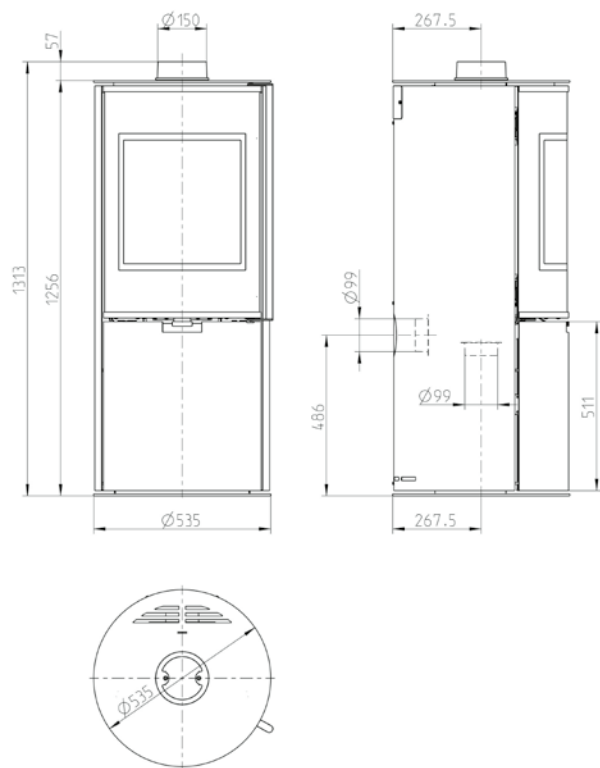


# ZARAGOZA Plus

ZARAGOZA Plus  
F9437150611

For modern houses we bring a 5 kW model. You can enjoy the pleasure of fire with always clean glass. To improve comfort, it is possible to install accumulation on the sidewalls and to prolong the heat radiation after the fire burned out.

ZARAGOZA Plus



ZARAGOZA Plus

Weight	133 kg
Regulation range	2,5 ÷ 7,5
Heat capacity	48 ÷ 124
Flue outlet	top
Fuel type	wood, briquette
Maximal length of wood	25 cm
Flue gas flow wood / briquette	5,9 / 6,1 g/s
Chimney draught	10/12 Pa
Certificates	1, 2, 3, 5, 7, 8





**TOLEDO**

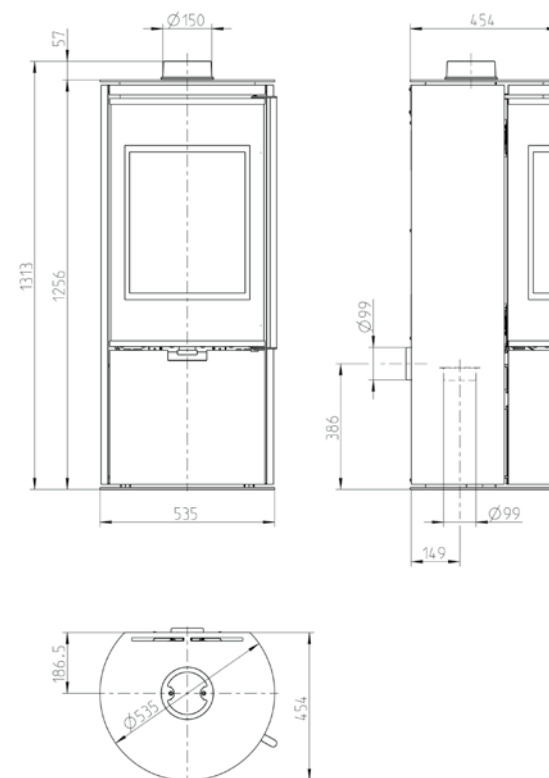
Weight	124 kg
Regulation range	3,8 ÷ 11,2 kW
Heat capacity	98 ÷ 180 m <sup>3</sup>
Flue outlet	top
Fuel type	wood
Maximal length of wood	25 cm
Flue gas flow wood / briquette	6,9 g/s
Chimney draught	12 Pa
Certificates	1, 2, 3, 5, 7, 8



**TOLEDO**  
F9489470611

**TOLEDO**

TOLEDO features a long handle that makes it easy to open the door. The handle is air-cooled to be safe. The large glass door allows you to relax by looking at the flames and this makes the fireplace a design interior element.

**TOLEDO**

# DYNAMIC Steel

Steel fireplace stoves with unique design for modern family houses or restaurants, designed by Slovak designer. The grateless fireplace hearth is lined with refractory concrete stones with high accumulation. The outer shell is made from quality Slovak steel and treated with heat-resistant ecological paint. Product has a central air supply and suitable for modern houses.

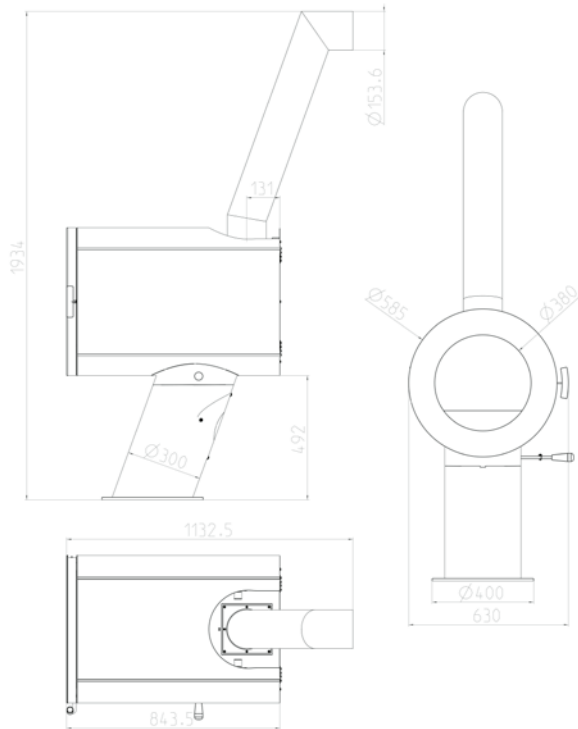
## DYNAMIC Steel

Weight	190 kg
Regulation range	6 ÷ 12
Heat capacity	98 ÷ 200
Flue outlet	top
Fuel type	wood
Maximal length of wood	33 cm
Flue gas flow wood / briquette	9,8 g/s
Chimney draught	12 Pa
Certificates	1, 3, 5, 8



DYNAMIC Steel  
F9459310611

## DYNAMIC Steel





## DYNAMIC Serpentino

Weight	435 kg
Regulation range	6 ÷ 12
Heat capacity	98 ÷ 200
Flue outlet	top
Fuel type	wood
Maximal length of wood	33 cm
Flue gas flow wood / briquette	9,8 g/s
Chimney draught	12 Pa
Certificates	1, 3, 5, 8



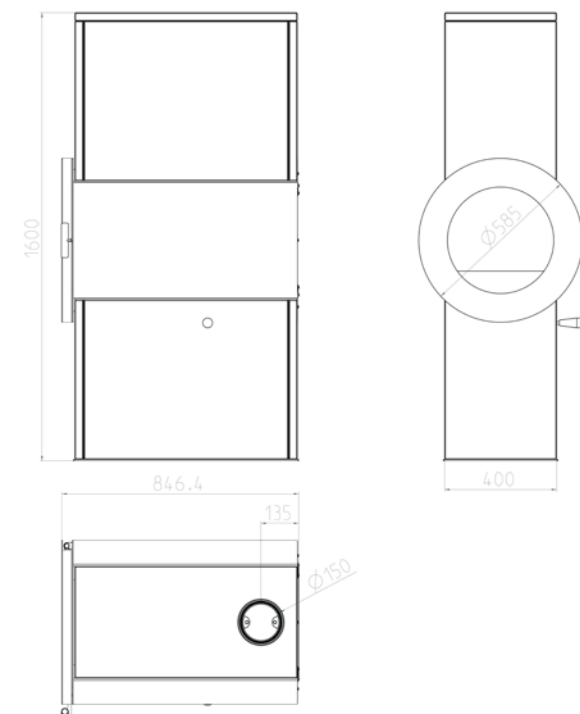
## DYNAMIC Serpentino F9459210611

# DYNAMIC Serpentino

The perfect stove for your castle, with simple design and warm stones. The round glass provides nice view on the flames of the fire. The total weight of 350kg makes perfect accumulation stone.



DYNAMIC Serpentino



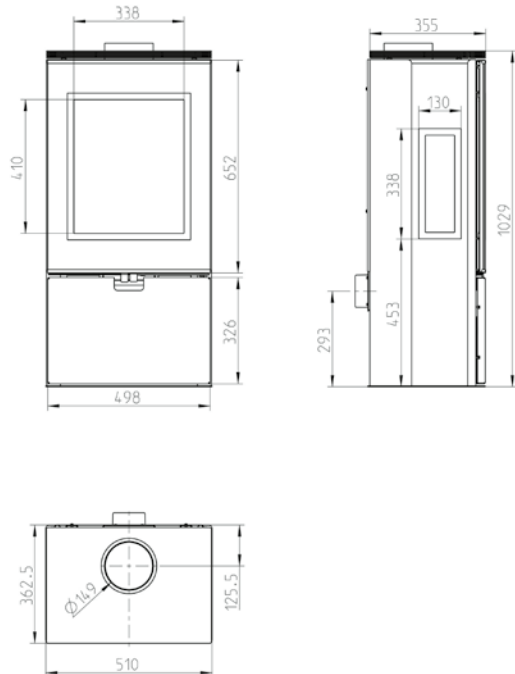


# WIESBADEN

WIESBADEN  
F9480530611

WIESBADEN is a timeless, elegant and standalone fixture for any design and style of home. Its unique 3-Sided glass panels that is achieved by adding glass panels to side of the stove which provide the extra generous visual access to the fire box.

## WIESBADEN



### WIESBADEN

Weight	109 kg
Regulation range	4 ÷ 12 kW
Heat capacity	98 ÷ 190 m <sup>3</sup>
Flue outlet	top
Fuel type	wood, briquette
Maximal length of wood	25 cm
Flue gas flow wood / briquette	7,9 / 7,7 g/s
Chimney draught	11 / 12 Pa
Certificates	1, 2, 3, 4, 5, 7, 8



82%



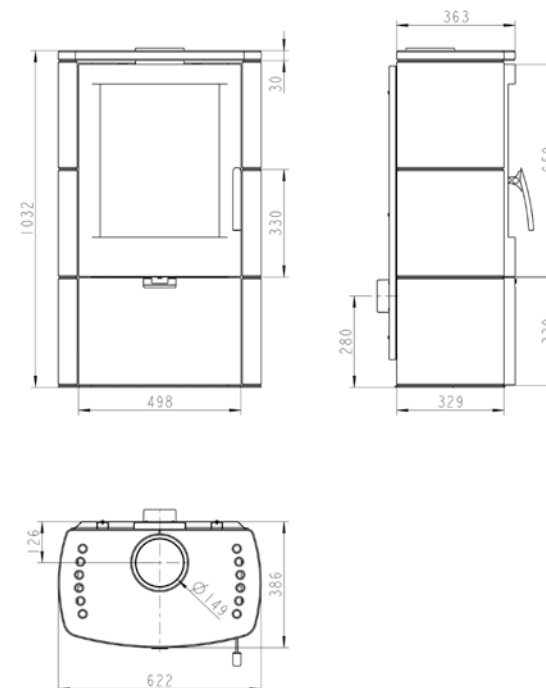
A+

**FALUN Serpentino**

Weight	182 kg
Regulation range	4 ÷ 12 kW
Heat capacity	98 ÷ 190 m <sup>3</sup>
Flue outlet	top
Fuel type	wood, briquette
Maximal length of wood	25 cm
Flue gas flow wood / briquette	7,9 / 7,7 g/s
Chimney draught	11 / 12 Pa
Certificates	1, 2, 3, 4, 5, 7, 8

**FALUN Serpentino**  
F9480047018**FALUN Serpentino**

A stylish and efficient freestanding stove with good sized viewing window and a storage drawer to keep the hearth less cluttered. The stove although primarily designed as a wood burner, will also burn lignite briquets. It can be adapted to draw air from outside for room sealed installations. Serpentino Soapstone is known as the ideal material for wood burning masonry heaters because it can absorb, store, and evenly radiate heat due to its high density.

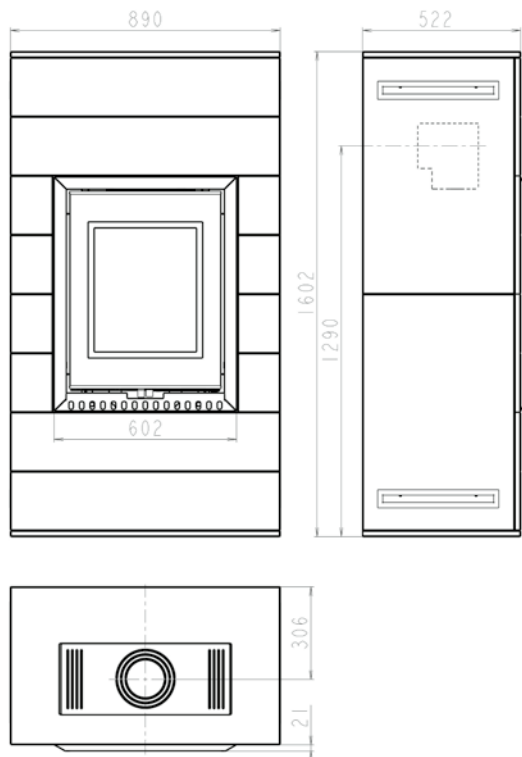
**FALUN Serpentino**

# RIVO

RIVO grey  
F9479247011

Unique modern fireplace set which fits in every modern house. The special design improves the time for installation and you can have the model assembled in one hour. The color of surface is possible to adapt to your wishes. Inside you can add the accumulation stones.

## RIVO



## RIVO

Weight	192 kg
Regulation range	4 ÷ 12
Heat capacity	98 ÷ 190
Flue outlet	top, back
Fuel type	wood, briquette
Maximal length of wood	25 cm
Flue gas flow wood / briquette	7,9 / 7,7 g/s
Chimney draught	11 / 12 Pa
Certificates	1, 2, 3, 5, 8



82%





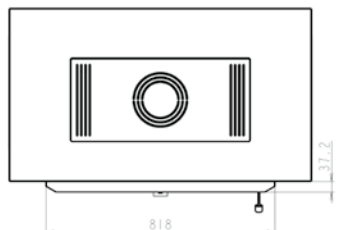
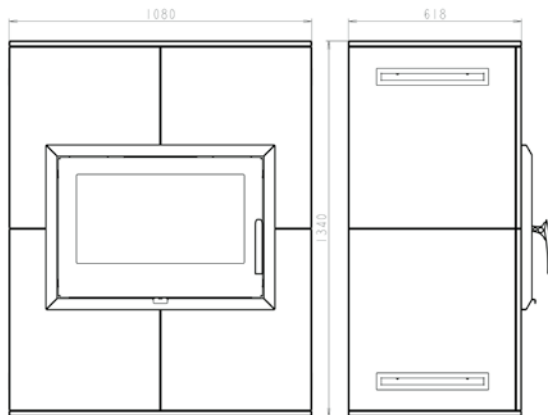


**RIVO white**  
F9479232011

# LAGO

Perfectly clean burning fireplace stove with modern design for modern house. The special design improves the time for installation and you can have the model assembled in one hour. The color of surface is possible to adapt to your wishes. Inside you can add the accumulation stones.

## LAGO



LAGO white  
F9479422011

### LAGO

Weight	269 kg
Regulation range	6 ÷ 17
Heat capacity	120 ÷ 220
Flue outlet	top, back
Fuel type	wood
Maximal length of wood	45 cm
Flue gas flow wood / briquette	8 g/s
Chimney draught	12 Pa
Certificates	1, 3, 5, 8



76%



A





## Combustion regulation

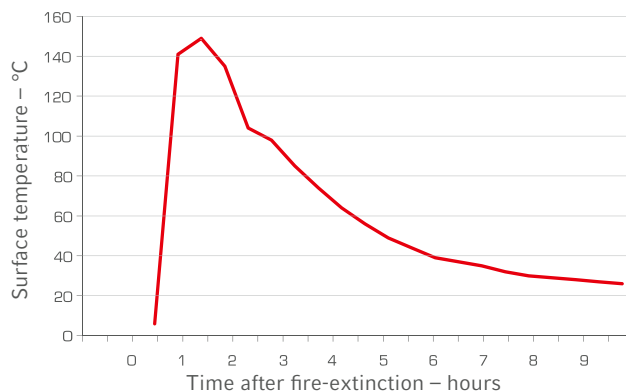


THORMA combustion control is designed and tested for THORMA fireplace stoves to prolong the burning process. Thanks to the regulation, you can reduce fuel consumption and thus achieve operating savings costs. Regulation will reduce the volume of emissions generated during the burning of solid fuel (wood, brown coal briquettes).

## Accumulation refractory

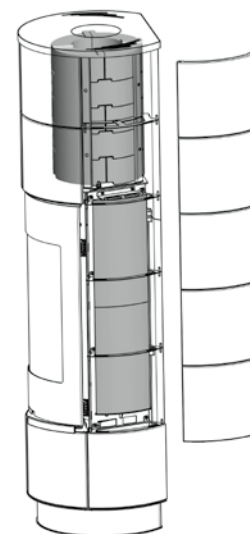
Stoves with heat accumulation are the more comfortable and also more economical. The heat is absorbed by the mass and prevents of overheating the room, once the fire gone out. We use natural accumulation material soapstone or the special heavy density refractory.

Fireplace stove with accumulation refractory concrete

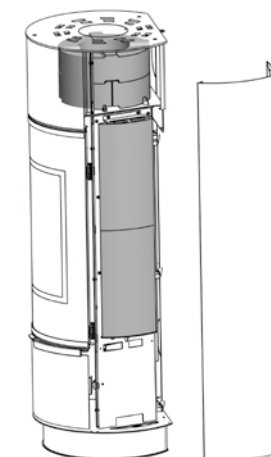


## Demonstration of installation

DELIA



ATIKA Steel

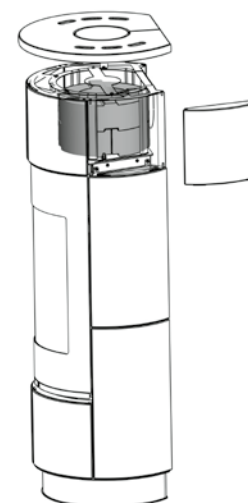


## Quantity and weight of refractory concrete in product

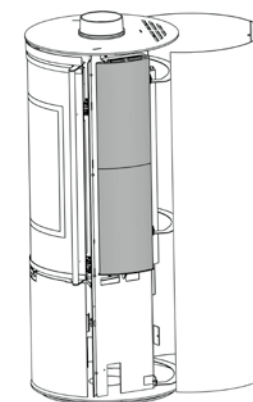


Model	Side [4.8 kg]	Half ring [5.3 kg]	U Shape [7.4 kg]	Total [kg]
ANDORRA Ceramic	4			19,2
DELIA Ceramic	4	6	3	51
DELIA Serpentino		6	3	31,8
ATIKA Ceramic	4	4	2	40,4
ATIKA Serpentino		4	2	21,2
TOLEDO	4			19,2
ZARAGOZA PLUS	4			19,2
DYNAMIC		8	4	42,4
RIVO fireplace set		8	4	42,4
LAGO fireplace set		6	3	31,8

ATIKA Serpentino



TOLEDO



**Technical data**

		Output [kW]	Efficiency (wood) [%]	Weight net [kg]	Regulation range [kW]	Heat capacity [m <sup>3</sup> ]	Flue outlet	Fuel type	Flue gas flow (wood / briquette) [g/s]	Chimney draught [Pa]	Flue gas temperature (wood) [°C]	Certificates
F9489212010	DELIA Ceramic white	7.5	84.2	158	3,8 ÷ 11,2	98 ÷ 180	top, back	wood	6,9	12	202,5	1, 2, 3, 5, 6, 7, 8
F9489612011	DELIA Ceramic PLUS white	7.5	84.2	160	3,8 ÷ 11,2	98 ÷ 180	top, back	wood	6,9	12	202,5	1, 2, 3, 5, 6, 7, 8
F9489622011	DELIA Ceramic EXTRA white	7.5	84.2	159	3,8 ÷ 11,2	98 ÷ 180	top, back	wood	6,9	12	202,5	1, 2, 3, 5, 6, 7, 8
F9489611011	DELIA Ceramic PLUS black	7.5	84.2	160	3,8 ÷ 11,2	98 ÷ 180	top, back	wood	6,9	12	202,5	1, 2, 3, 5, 6, 7, 8
F9489621011	DELIA Ceramic EXTRA black	7.5	84.2	159	3,8 ÷ 11,2	98 ÷ 180	top, back	wood	6,9	12	202,5	1, 2, 3, 5, 6, 7, 8
F9489230610	DELIA Serpentino	7.5	84.2	285	3,8 ÷ 11,2	98 ÷ 180	top, back	wood	6,9	12	202,5	1, 2, 3, 5, 6, 7, 8
F9489630611	DELIA Serpentino PLUS	7.5	84.2	287	3,8 ÷ 11,2	98 ÷ 180	top, back	wood	6,9	12	202,5	1, 2, 3, 5, 6, 7, 8
F9489640611	DELIA Serpentino EXTRA	7.5	84.2	286	3,8 ÷ 11,2	98 ÷ 180	top, back	wood	6,9	12	202,5	1, 2, 3, 5, 7, 8
F9489272011	ATIKA Standard white	7.5	84.2	146	3,8 ÷ 11,2	98 ÷ 180	top, back	wood	6,9	12	202,5	1, 2, 3, 5, 7, 8
F9489292012	ATIKA Standard white with accumulation	7.5	84.2	188	3,8 ÷ 11,2	98 ÷ 180	top, back	wood	6,9	12	202,5	1, 2, 3, 5, 7, 8
F9489280611	ATIKA Standard Serpentino	7.5	84.2	269	3,8 ÷ 11,2	98 ÷ 180	top, back	wood	6,9	12	202,5	1, 2, 3, 5, 7, 8
F9489652011	ATIKA EXTRA white	7.5	84.2	147	3,8 ÷ 11,2	98 ÷ 180	top, back	wood	6,9	12	202,5	1, 2, 3, 5, 7, 8
F9489651011	ATIKA EXTRA black	7.5	84.2	147	3,8 ÷ 11,2	98 ÷ 180	top, back	wood	6,9	12	202,5	1, 2, 3, 5, 7, 8
F9489660611	ATIKA EXTRA Serpentino	7.5	84.2	270	3,8 ÷ 11,2	98 ÷ 180	top, back	wood	6,9	12	202,5	1, 2, 3, 5, 7, 8
F9489320611	ATIKA PLUS black	7.5	84.2	148	3,8 ÷ 11,2	98 ÷ 180	top, back	wood	6,9	12	202,5	1, 2, 3, 5, 7, 8
F9489330611	ATIKA PLUS black with accumulation	7.5	84.2	190	3,8 ÷ 11,2	98 ÷ 180	top, back	wood	6,9	12	202,5	1, 2, 3, 5, 7, 8
F9489322011	ATIKA PLUS white	7.5	84.2	148	3,8 ÷ 11,2	98 ÷ 180	top, back	wood	6,9	12	202,5	1, 2, 3, 5, 7, 8
F9489332011	ATIKA PLUS white with accumulation	7.5	84.2	190	3,8 ÷ 11,2	98 ÷ 180	top, back	wood	6,9	12	202,5	1, 2, 3, 5, 7, 8
F9489480611	ATIKA STEEL black	7.5	84,2	140	3,8 ÷ 11,2	98 ÷ 180	top, back	wood	6,9	12	202,5	1, 2, 3, 5, 7, 8
F9489712011	ANDORRA Ceramic Standard white	7.5	80.4	119	3,8 ÷ 11,2	98 ÷ 180	top	wood	6,9	12	271	1, 2, 3, 5, 6, 7, 8
F9489711011	ANDORRA Ceramic Standard black	7.5	80.4	119	3,8 ÷ 11,2	98 ÷ 180	top	wood	6,9	12	271	1, 2, 3, 5, 6, 7, 8
F9489722011	ANDORRA Ceramic PLUS white	7.5	80.4	121	3,8 ÷ 11,2	98 ÷ 180	top	wood	6,9	12	271	1, 2, 3, 5, 6, 7, 8
F9489732011	ANDORRA Ceramic EXTRA white	7.5	80.4	120	3,8 ÷ 11,2	98 ÷ 180	top	wood	6,9	12	271	1, 2, 3, 5, 6, 7, 8
F9489721011	ANDORRA Ceramic PLUS black	7.5	80.4	121	3,8 ÷ 11,2	98 ÷ 180	top	wood	6,9	12	271	1, 2, 3, 5, 6, 7, 8
F9489731011	ANDORRA Ceramic EXTRA black	7.5	80.4	120	3,8 ÷ 11,2	98 ÷ 180	top	wood	6,9	12	271	1, 2, 3, 5, 6, 7, 8
F9489740611	ANDORRA Serpentino Standard	7.5	80.4	199	3,8 ÷ 11,2	98 ÷ 180	top	wood	6,9	12	271	1, 2, 3, 5, 6, 7, 8
F9489750611	ANDORRA Serpentino PLUS	7.5	80.4	201	3,8 ÷ 11,2	98 ÷ 180	top	wood	6,9	12	271	1, 2, 3, 5, 6, 7, 8
F9489760611	ANDORRA Serpentino EXTRA	7.5	80.4	200	3,8 ÷ 11,2	98 ÷ 180	top	wood	6,9	12	271	1, 2, 3, 5, 6, 7, 8
F9437150611	ZARAGOZA PLUS black	5.0	81.2	133	2,5 ÷ 7,5	48 ÷ 124	top	wood, briquette	5,9 / 6,1	10	230	1, 2, 3, 5, 7, 8
F9459310611	DYNAMIC Steel	9.0	78.7	190	6 ÷ 11,2	98 ÷ 200	top	wood	6,9	12	242	1, 3, 5, 8
F9459210611	DYNAMIC Serpentino	9.0	78.7	435	6 ÷ 11,2	98 ÷ 200	top	wood	6,9	12	242	1, 3, 5, 8
F9489470611	TOLEDO black	7.5	84,2	124	3,8 ÷ 11,2	98 ÷ 180	top	wood	6,9	12	202,5	1, 2, 3, 5, 7, 8
F9480530611	WIESBADEN black	7.5	80.1	109	4 ÷ 12	98 ÷ 190	top	wood, briquette	7,9 / 7,7	11	223	1, 2, 3, 4, 5, 7, 8
F9480047018	FALUN grey/serpentino	7.5	80.1	182	4 ÷ 12	98 ÷ 190	top	wood, briquette	7,9 / 7,7	11	223	1, 2, 3, 4, 5, 7, 8
F9489242011	DELIA Ceramic white with accumulation	7.5	84.2	211	3,8 ÷ 11,2	98 ÷ 180	top, back	wood	6,9	12	202,5	1, 2, 3, 5, 6, 7, 8
F9489243111	DELIA Ceramic ivory with accumulation	7.5	84.2	211	3,8 ÷ 11,2	98 ÷ 180	top, back	wood	6,9	12	202,5	1, 2, 3, 5, 6, 7, 8
F9489622012	DELIA Extra white with accumulation	7.5	84.2	212	3,8 ÷ 11,2	98 ÷ 180	top, back	wood	6,9	12	202,5	1, 2, 3, 5, 7, 8
F9479232011	RIVO fireplace set white	7.5	80.1	192	4 ÷ 12	98 ÷ 190	top, back	wood, briquette	7,9 / 7,7	11	223	1, 2, 3, 5, 7, 8
F9479247011	RIVO fireplace set grey	7.5	80.1	192	4 ÷ 12	98 ÷ 190	top, back	wood, briquette	7,9 / 7,7	11	223	1, 2, 3, 5, 7, 8
F9479422011	LAGO fireplace set white	11.5	76.4	269	6 ÷ 17	120 ÷ 220	top, back	wood	8	12	386	1, 3, 5, 8
F9479437011	LAGOfireplace set grey	11.5	76.4	269	6 ÷ 17	120 ÷ 220	top, back	wood	8	12	386	1, 3, 5, 8
F9489430611	ZION Serpentino	7.5	84.2	365	3,8 ÷ 11,2	98 ÷ 180	top, back	wood	6,9	12	202,5	1, 2, 3, 5, 7, 8

All specifications, dimensions and information showed in our brochure are informative only and not binding. THORMA Výroba s.r.o. reserve the right for amend or change them.



**THORMA**

More than 100 year tradition

**EXCLUSIVE PRODUCTS**

THORMA Výroba s.r.o.  
Šávoľská cesta 1, 986 01 Fiľakovo  
SLOVAKIA

HOTLINE: 0800 200 550  
www.thorma.sk  
<https://sk-sk.facebook.com/ThormaVyroba>